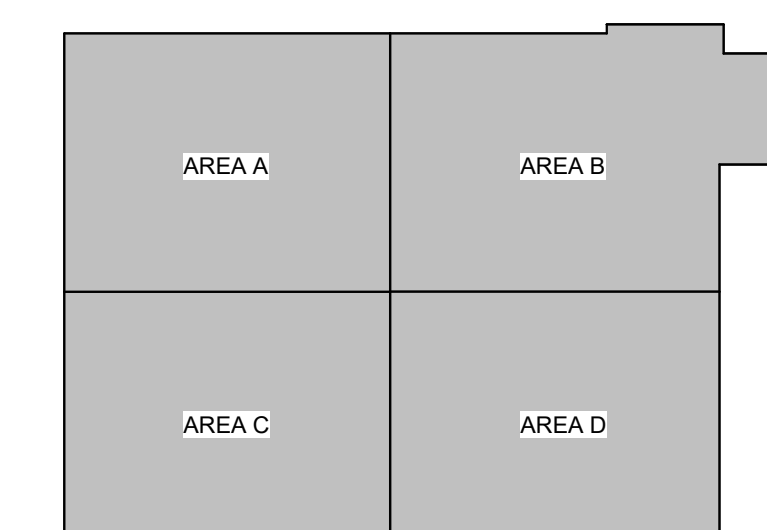
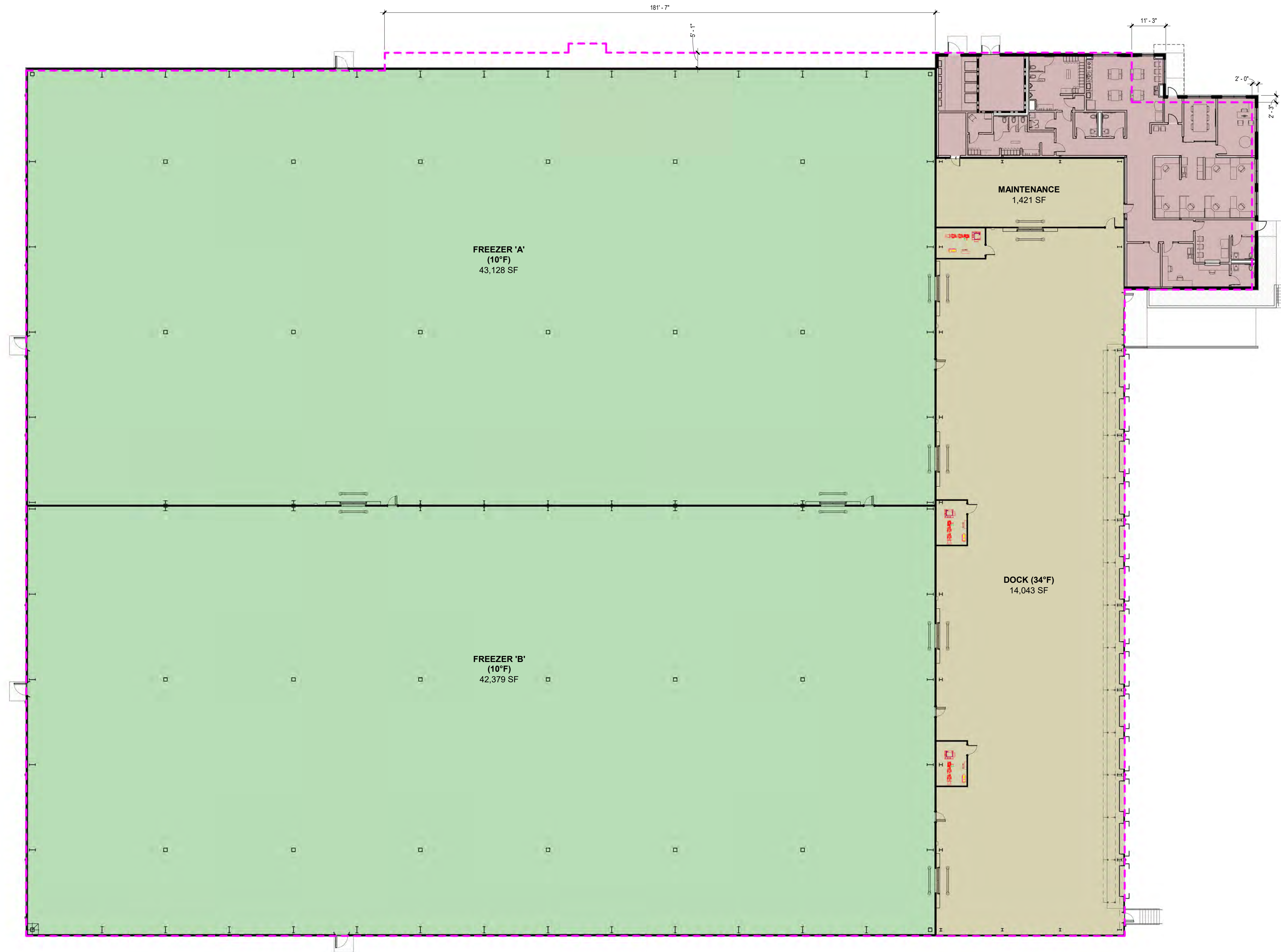


5/13/2022 8:42:07 AM



 KEY PLAN

**MAINE INTERNATIONAL  
COLD STORAGE FACILITY**

50 W Commercial St  
Portland, ME 04101

NOT FOR CONSTRUCTION

CERTIFIED BY

ISSUANCE INDEX	
DATE:	
05/11/2022	
PROJECT PHASE:	
PROGRESS REVIEW	

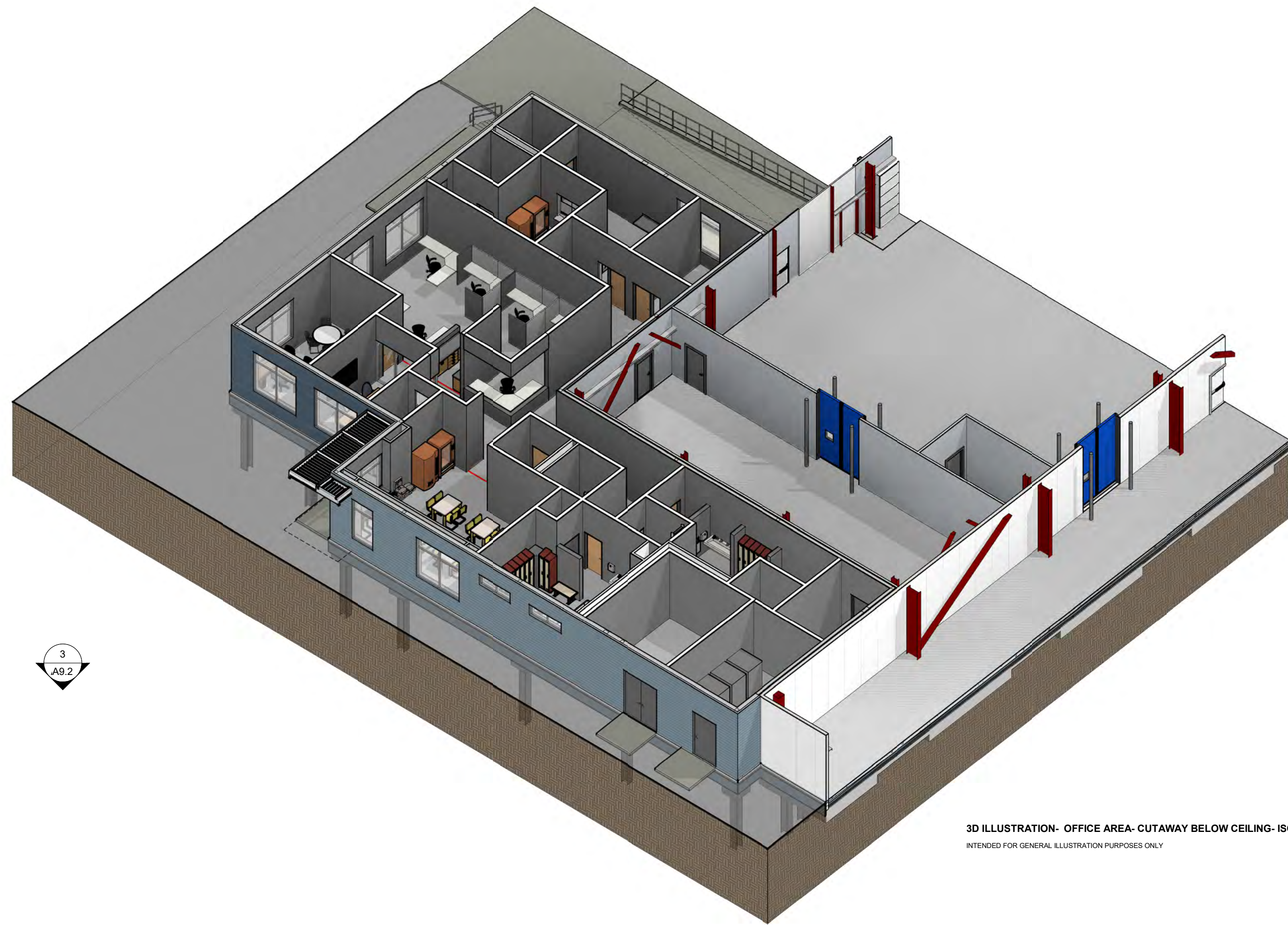
REVISION SCHEDULE		
NO.	DESCRIPTION	DATE

Project Number 2021.00305

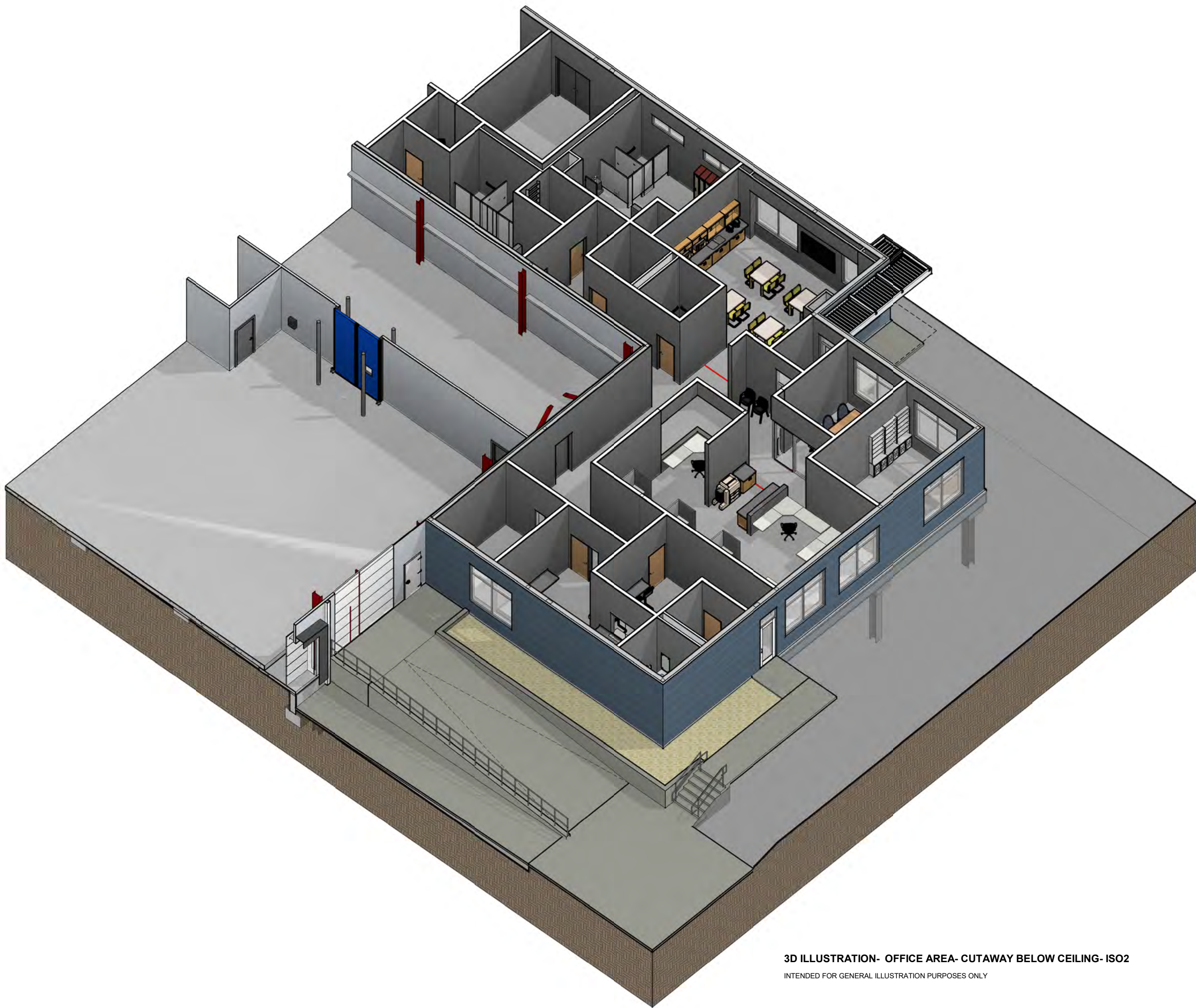
FLOOR PLAN

A9.0





3D ILLUSTRATION- OFFICE AREA- CUTAWAY BELOW CEILING- ISO3  
INTENDED FOR GENERAL ILLUSTRATION PURPOSES ONLY



3D ILLUSTRATION- OFFICE AREA- CUTAWAY BELOW CEILING- ISO2  
INTENDED FOR GENERAL ILLUSTRATION PURPOSES ONLY

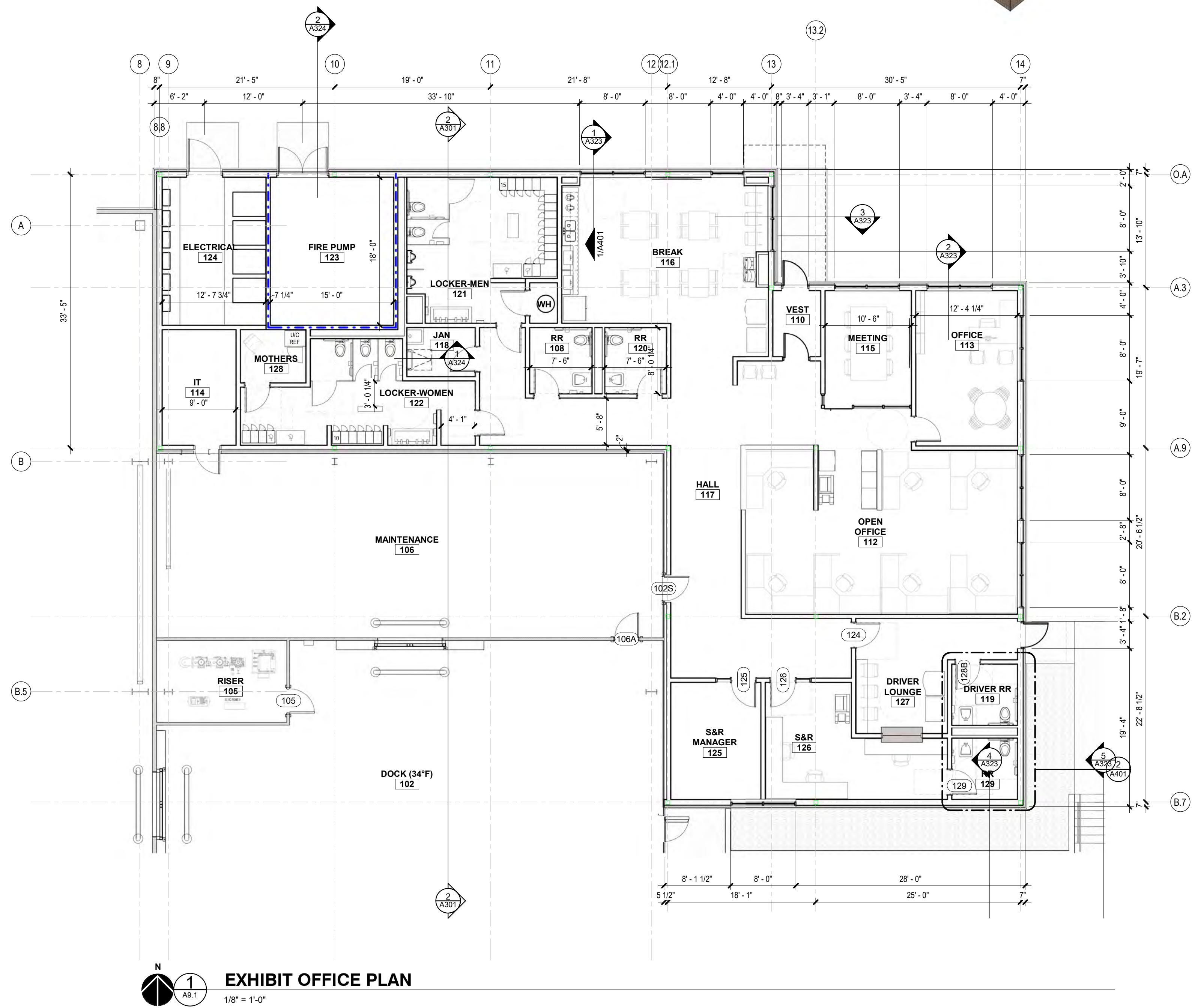
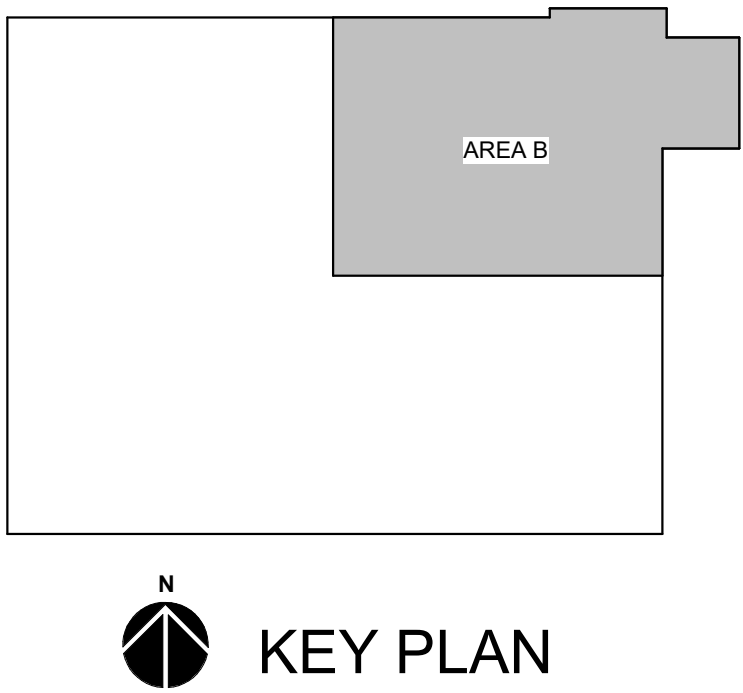


EXHIBIT OFFICE PLAN  
1/8" = 1'-0"



KEY PLAN

**MAINE INTERNATIONAL  
COLD STORAGE FACILITY**

50 W Commercial St  
Portland, ME 04101

NOT FOR CONSTRUCTION

CERTIFIED BY

ISSUANCE INDEX	
DATE:	05/11/2022
PROJECT PHASE:	PROGRESS REVIEW

REVISION SCHEDULE		
NO.	DESCRIPTION	DATE

Project Number 2021.00305

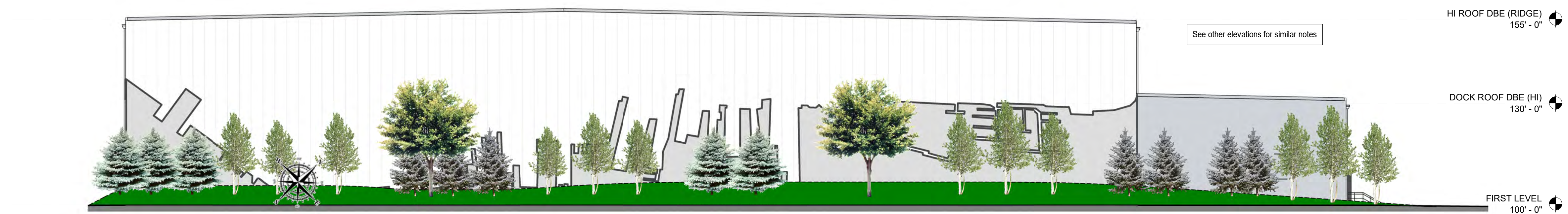
EXHIBIT-OFFICE PLAN

A9.1

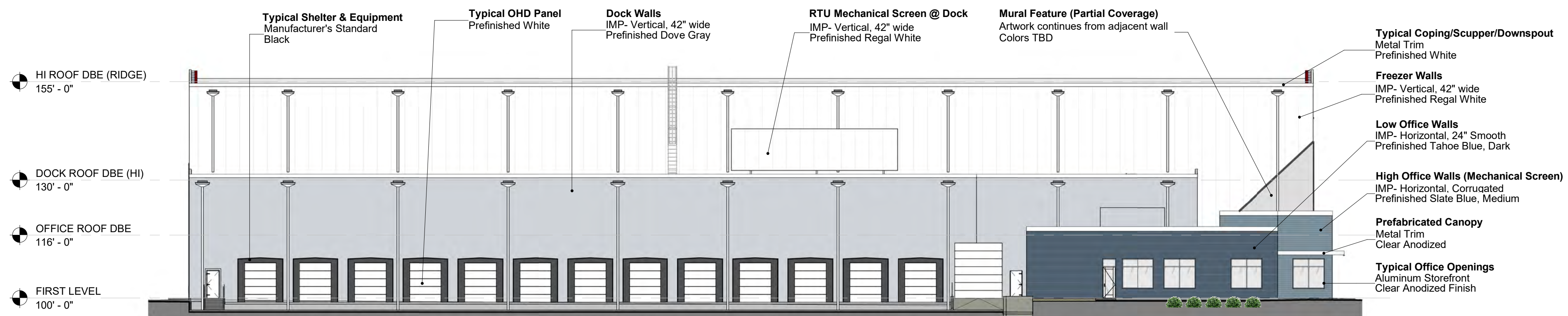




NORTH ELEVATION-EXHIBIT  
1" = 20'-0"



SOUTH ELEVATION-EXHIBIT  
1" = 20'-0"



EAST ELEVATION-EXHIBIT  
1" = 20'-0"



WEST ELEVATION-EXHIBIT



MAINE INTERNATIONAL  
COLD STORAGE FACILITY

50 W Commercial St  
Portland, ME 04101

NOT FOR CONSTRUCTION

CERTIFIED BY

ISSUANCE INDEX	
DATE:	05/11/2022
PROJECT PHASE:	PROGRESS REVIEW

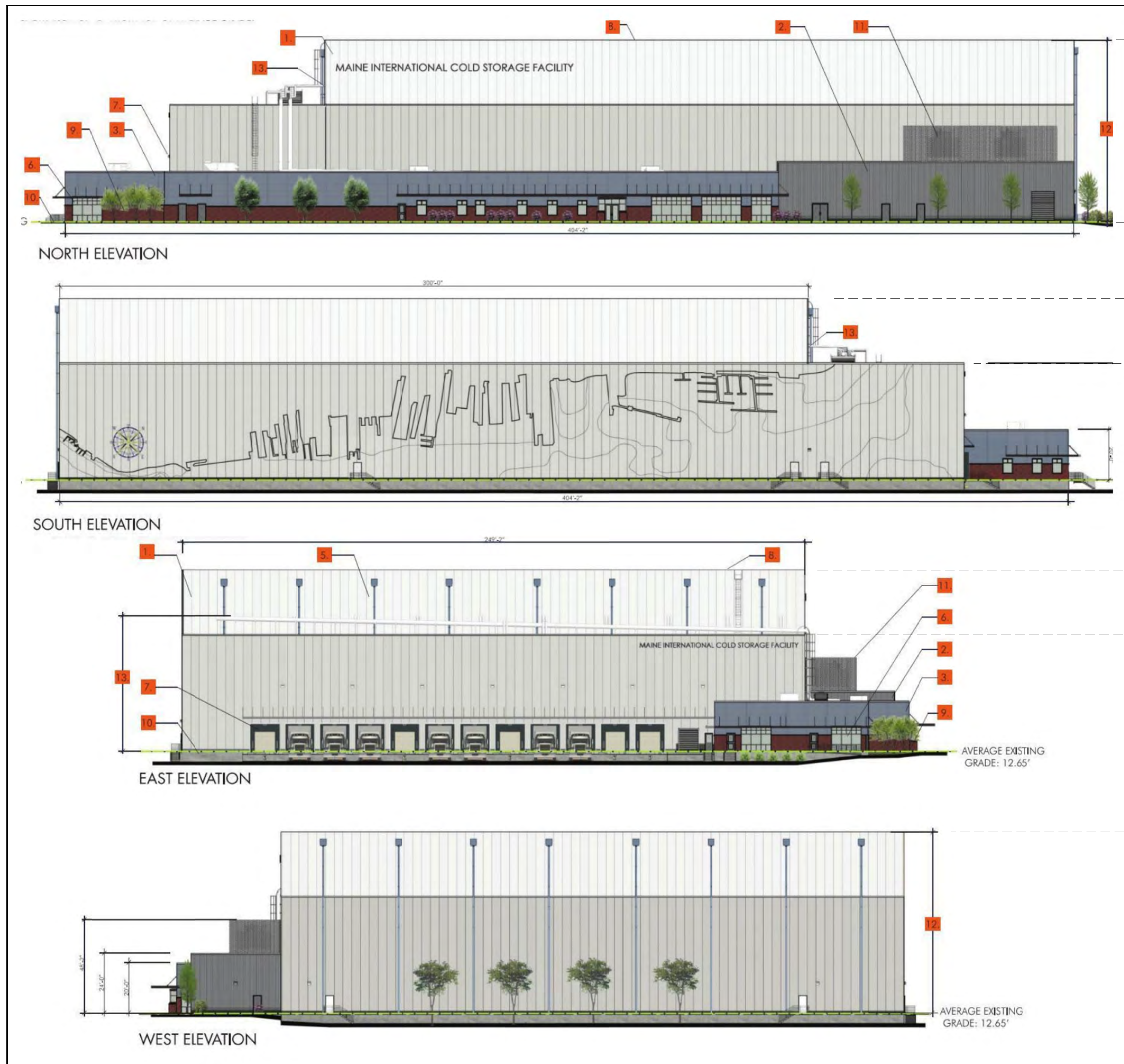
REVISION SCHEDULE		
NO.	DESCRIPTION	DATE

Project Number 2021.00305

Exterior Elevations  
Exhibit

A9.2





PREVIOUS ELEVATIONS



PROPOSED ELEVATIONS

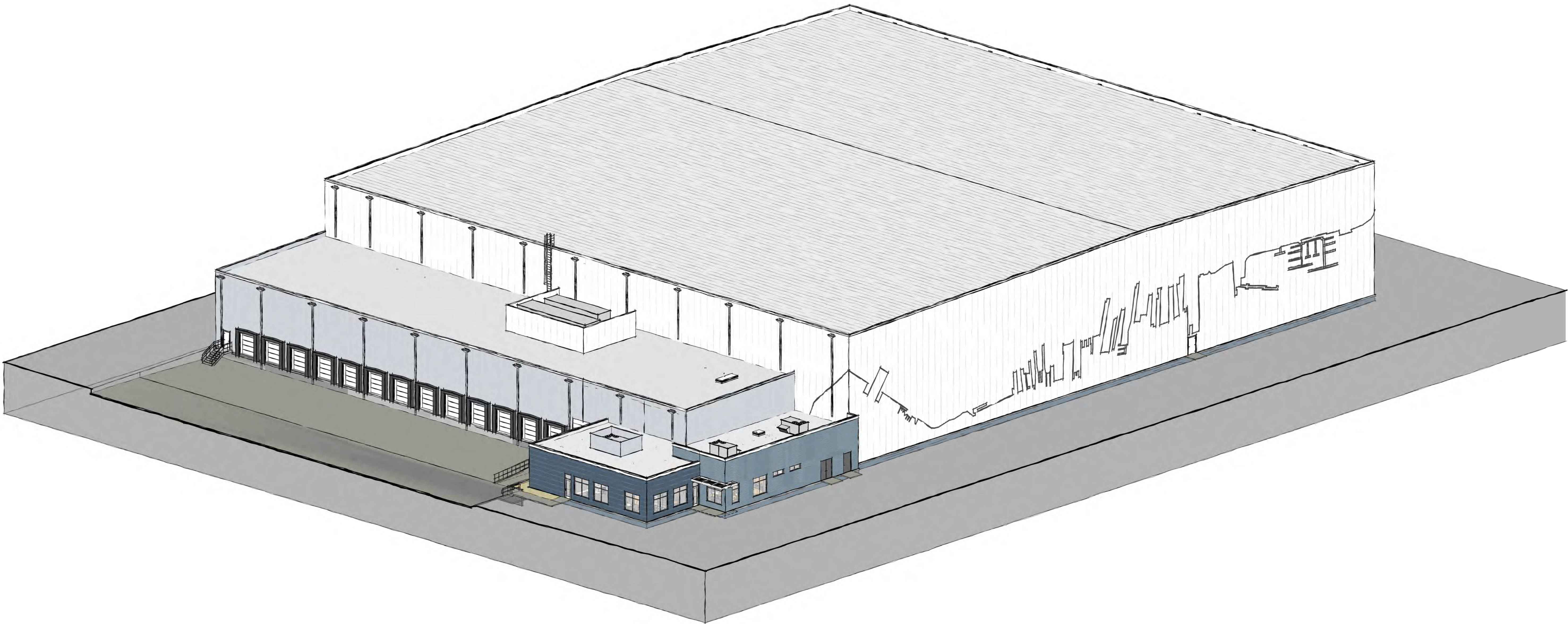




Mechanical Equipment is screened by an Insulated Metal Panel (IMP) wall system. Panel color and pattern to match Freezer exterior walls

Design Intent is to screen the Office Roof Top Units (RTUs) with tall parapet exterior walls. However, if an RTU is required at the low parapet area of the Office roof, it will be concealed by a 6' high equipment mounted screen. Panel color and pattern to match the Dock exterior wall. Basis of design = Cityscapes Enviroir

Mural Artwork continues from adjacent wall. Colors TBD



AMERICAN  
**STRUCTUREPOINT**  
INC.

9025 River Road, Suite 200, Indianapolis, Indiana 46240  
TEL: 317.547.5580 FAX: 317.547.5581 www.structurepoint.com

MAINE INTERNATIONAL  
COLD STORAGE FACILITY

50 W Commercial St  
Portland, ME 04101

NOT FOR CONSTRUCTION

CERTIFIED BY

ISSUANCE INDEX	
DATE:	
05/11/2022	
PROJECT PHASE:	
PROGRESS REVIEW	

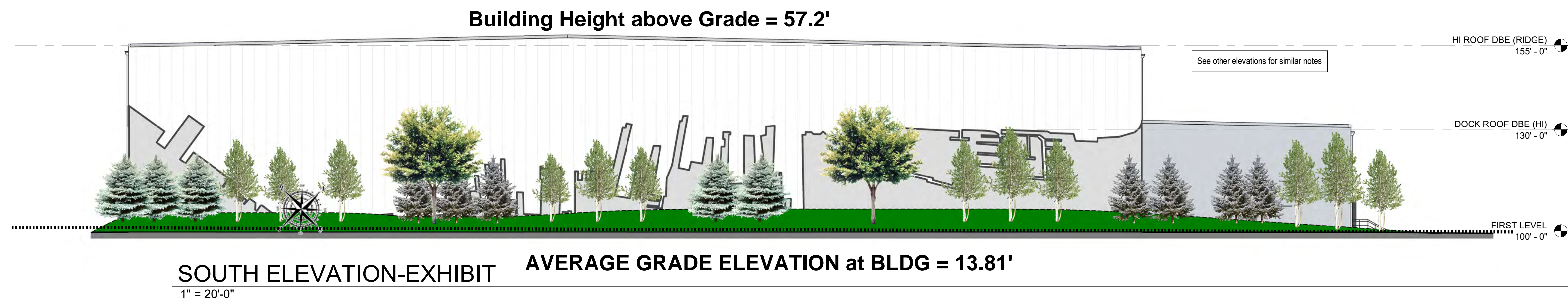
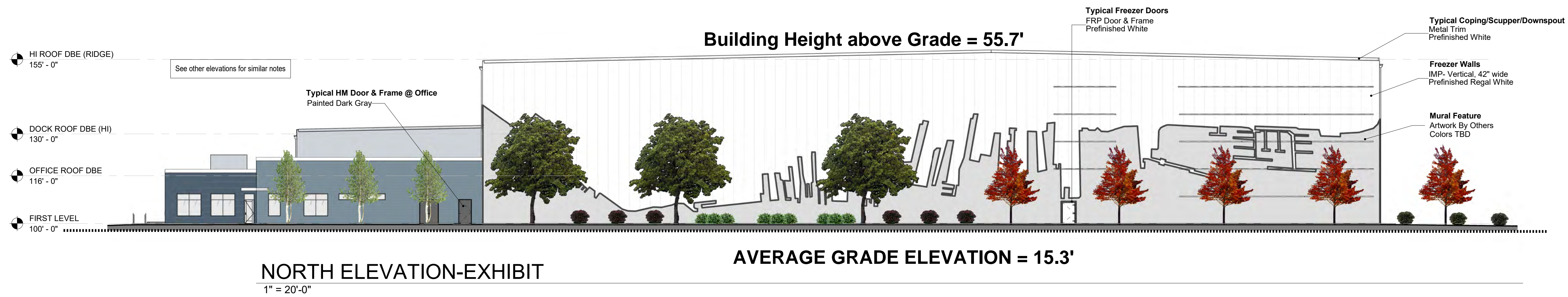
REVISION SCHEDULE		
NO.	DESCRIPTION	DATE

Project Number 2021.00305

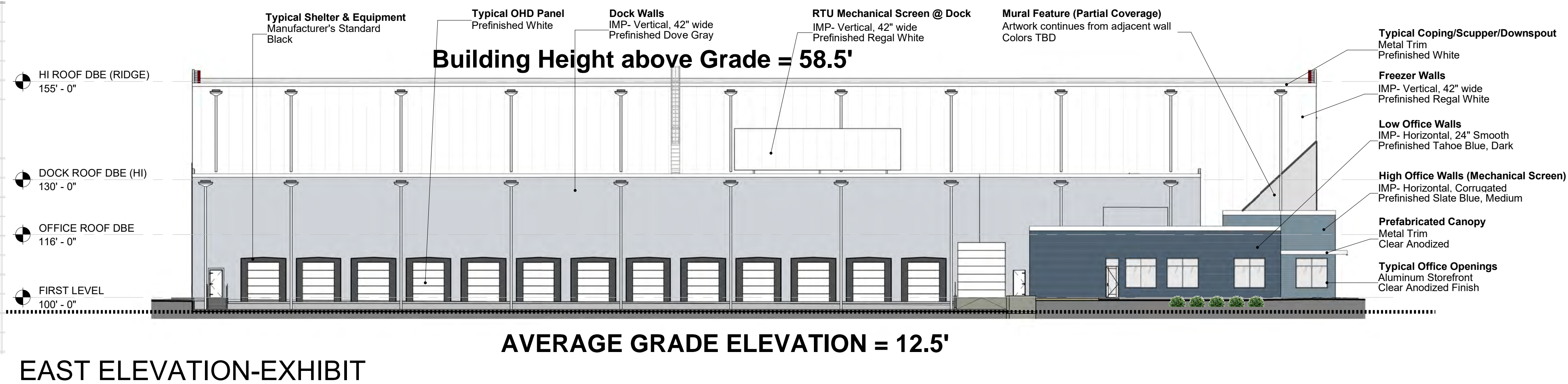
3D Sketches Exhibit

A9.9

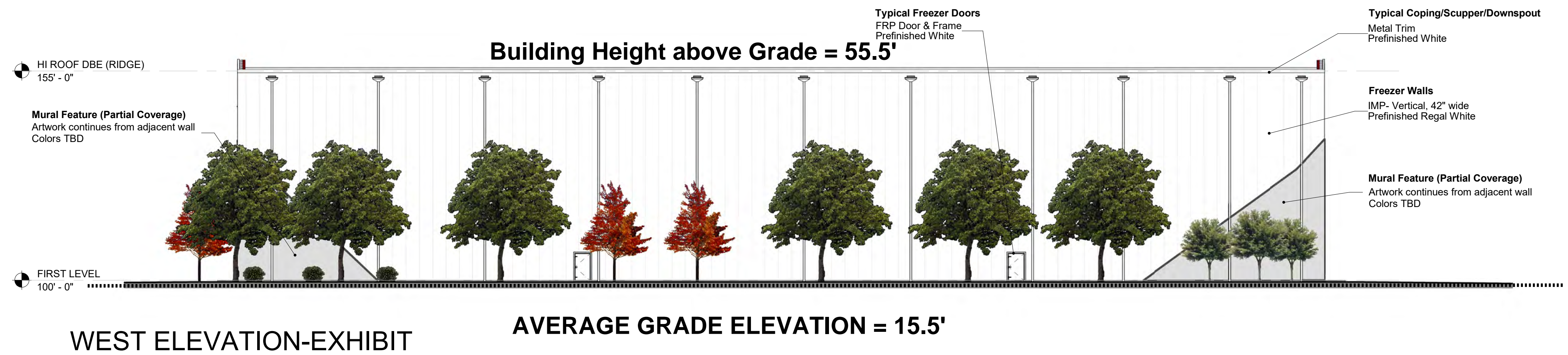




Maine Cold Storage Warehouse Facility			
Roof Height (ft)		55.0	
Roof height (elevation)		71.0	
Building side	Average exterior grade (ft)(NGVD29)	Building height above exterior grade (ft)	
South	13.81	57.2	
East	12.5	58.5	
West	15.5	55.5	
North	15.3	55.7	
Average Grade		14.2775	
Average Height		56.72 ft.	



Overall Average Building Height = 56.72'



## MAINE INTERNATIONAL COLD STORAGE FACILITY

50 W Commercial St  
Portland, ME 04101

NOT FOR CONSTRUCTION

CERTIFIED BY

ISSUANCE INDEX	
DATE:	05/11/2022
PROJECT PHASE:	PROGRESS REVIEW

REVISION SCHEDULE		
NO.	DESCRIPTION	DATE

Project Number 2021.00305

Exterior Elevations  
Exhibit

A9.2